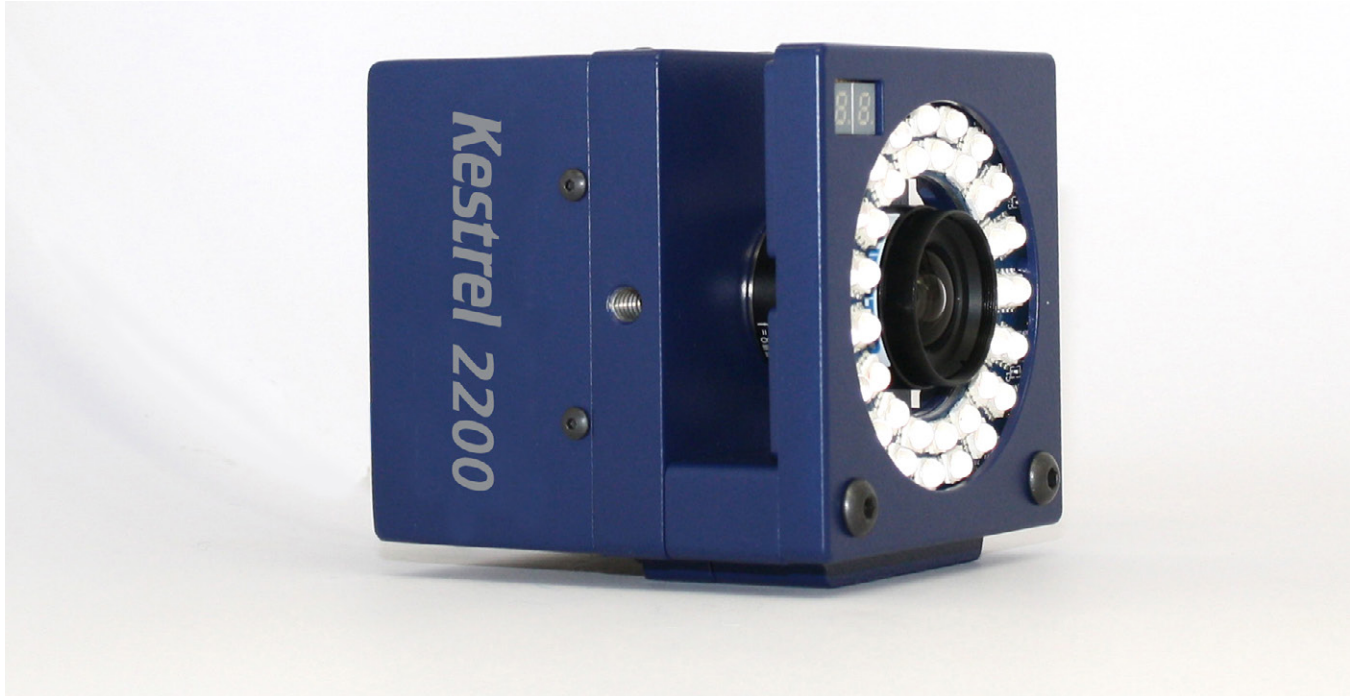


Kestrel 2200 Digital RealTime System



CAMERA

| | |
|------------------------------------|-------------------------------------|
| Frame size (pixels) | 2.2 megapixels |
| Resolution | 2048 x 1088 |
| Frame rate at full resolution | 300 fps |
| Sensor maximum frame rate | 10,000 fps |
| Shutter type | Global Shutter |
| Standard lens | 8 mm, 12-36 mm Zoom |
| Camera power supply | HCP-8 |
| Camera connectors | Ethernet, Sync in/out |
| Camera cabling | Standard Cat5E, power over ethernet |
| Camera body dimensions | 86mm wide x 80mm deep x 90mm high |
| Camera weight, including ringlight | 1.25 lb. (0.57 kg) |
| Number of camera mount points | 5 |

RINGLIGHT

| | |
|-------------------------|--|
| Strobe Type | Near Infrared (750 nm), Full Infrared (850 nm) |
| Strobe electronics | Integrated, software reprogrammable |
| LEDs | 36 surface mount |
| Adjustable Illumination | Yes |

Motion Analysis Corporation
3617 Westwind Boulevard
Santa Rosa, CA USA 95403

(T) 707.579.6500
www.motionanalysis.com
info@motionanalysis.com

ENVIRONMENTAL

| | |
|------------------------|------------------------------|
| Temperature, Operating | 10° to 25°C, (50° to 77°F) |
| Temperature, Storage | -40° to 65°C (-40° to 149°F) |
| Relative Humidity | 20% to 80% (non-condensing) |

SYSTEM CONNECTIVITY

| | |
|----------------------------------|------------------|
| Plug and play compatability | Yes |
| System connectivity | Gigabit Ethernet |
| Custom control interface | Yes |
| Camera number indicator | Yes |
| Integrated camera display panel | No |
| Insight auto-focus | Yes |
| Communication status indicators | Yes |
| Maximum number of cameras | Unlimited |
| Multiple camera types in system | Yes |
| Genlock to external video source | Yes |
| Synchronize to external signal | Yes |
| IP addressable | Yes |
| IP reconfigurable | Yes |
| External A/D sync and clock | Yes |

